

ZEISS COMET® Photogrammetry

3D Digitizing / Fringe Projection

Integrated photogrammetry unit

for the acquisition of 3D reference points



ZEISS COMET® Photogrammetry

Integrated photogrammetry unit
for the acquisition of 3D reference points

Get your complex 3D digitizing projects done more efficiently!
With our new, integrated photogrammetry equipment for the acquisition of 3D reference points, a cost-effective system solution featuring easy handling and high accuracy is now available. The high-performance software platform colin3D ensures a consistently efficient and project-oriented procedure during the entire measuring process.



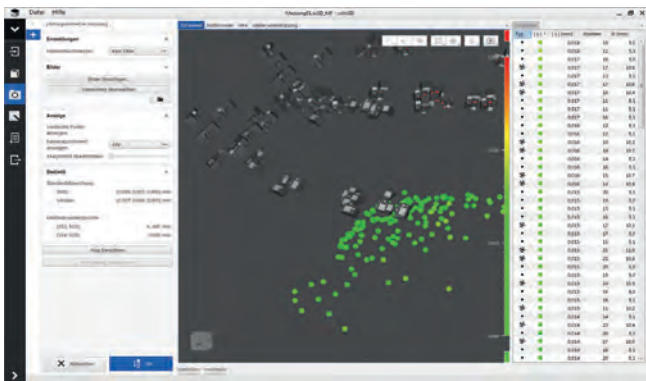
ZEISS COMET Photogrammetry: compact hardware for large measurement volumes

Direct software integration

The direct interface between the photogrammetry configuration and the digitizing software ZEISS colin3D allows a highly efficient and time saving measurement process.

Perfectly tuned hardware

High-quality hardware components such as cameras and lenses accompanied by a wide selection of accessories (certified reference bars/crosses, markers, adapter cubes) are perfectly tuned to the complete ZEISS COMET sensor series and are a guarantee for the highest precision.



Software ZEISS colin3D: fully integrated ZEISS COMET Photogrammetry with display of data quality by color-coded points / measurement positions (above/below)

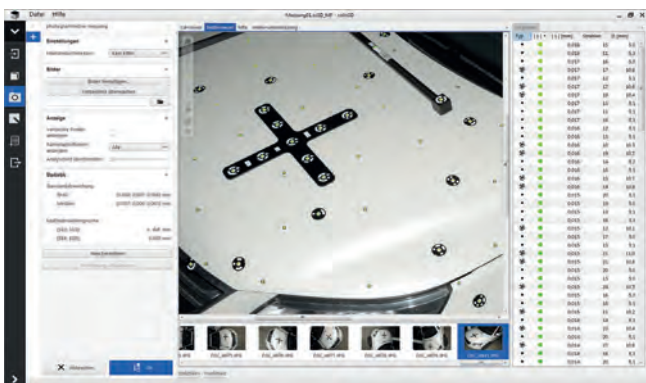
Affordable all-in-one solution and optimal efficiency

Every system configuration is freely scalable and allows an easy adaptation to any object. The acquisition and matching of single 3D measurements is done in efficient workflows. With the new sensor and photogrammetry packages featuring sophisticated interfaces, easy handling and modular accessory components, ZEISS offers both technically and economically convincing single-source system solutions.

Accessories

Adapted to customer-specific requirements, available in various sizes/lengths/configurations:

- Reference crosses
- Reference bars
- Markers (magnetic and/or sticker markers)
- Adapters





Software highlights

- Windows 7 64Bit
- Clear and easy-to-use user interface
- W-LAN connectivity (option)
- Automatic point measurement
- Automatic assignment of scale bars, reference cross and coded markers
- Image display with indication of point ID
- 3D display with indication of camera position and point ID
- Easy data selection in tabular and 3D display
- Adapter measurement for determination of edges, holes, etc.
- Export of points
- Automatic registration of single COMET measurements
- Functions in combination with ZEISS colin3D and inspection software:
 - Evaluation of adapter measurement
 - Point-to-point surface comparison
 - Deformation analysis



Extensive accessories (e.g. scales, adapters, W-LAN kit) for system adaptation to individual measurement tasks

Camera resolution	36.3 megapixel with ZEISS 28 mm industrial lens and flash device
Recommended measurement volume	from 100 x 100 x 100 mm ³ up to 10 x 10 x 10 m ³
optional	W-LAN connectivity

Carl Zeiss
Optotechnik GmbH
Georg-Wiesböck-Ring 12
83115 Neubeuern
Germany

Phone: +49 8035 8704-0
Fax: +49 8035 1010
Email: optotechnik.metrology.de@zeiss.com
Website: <http://optotechnik.zeiss.com>